



National Chemical  
Laboratories

F  
L  
O  
O  
R  
C  
A  
R  
E

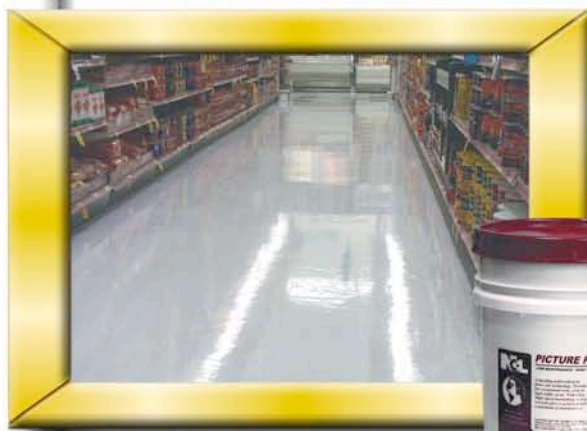
*Modern Art...*



**PERFECTED!**

## **PICTURE PERFECT**

**Low Maintenance / High Traffic Floor Finish**



***You need not travel to Paris  
to see the finest example  
of modern art. . .***

**PICTURE PERFECT** is a dazzling achievement in floor care technology. This premier high solids floor finish offers the highest initial application gloss and exceptional

wear, especially in high traffic areas such as supermarkets, retail stores and large office building lobbies. With Ultra High Speed Burnishing, **PICTURE PERFECT** produces a deep wet look gloss, and requires a minimum of restorative maintenance to save time, labor, and money!

### **PICTURE PERFECT PRODUCT BENEFITS:**

- *Highest immediate "wet-look" gloss*
- *Superior gloss retention*
- *Endura™ advanced polymer system offers the ultimate in high-traffic wear*
- *Outstanding leveling*
- *Unparalleled soil repellency*
- *Combination Sealer / Finish*

**Exclusively designed for use with Ultra High Speed Battery, Electric or Propane Equipment**



Picture Perfect™  
Floor Coating and Finishing Material  
Classified by Underwriters Laboratories, Inc.  
As to Slip Resistance Only 18 EL

**World Class Cleaning Solutions™**

# Artistic brilliance in floor care technology!



**PICTURE PERFECT**  
offers the ultimate in both  
initial laydown & long-term  
gloss retention

## SPECIFICATIONS

Type ..... Integrated Fusion Polymer  
Color ..... White, Opaque liquid  
Odor ..... Typical acrylic  
Non-Volatile Solids ..... 22.0 ± .5%  
pH ..... 8.4-8.8  
Drying Time ..... 30 minutes  
Coverage ..... 2,500 sq. ft. / gal.

Specific Gravity ..... 1.032  
Density (lbs. / gal.) ..... 8.597  
Slip Resistant ..... Yes  
Freeze Thaw Stable ..... Yes (3 cycles)  
Detergent Resistant ..... Yes  
Leveling ..... Excellent  
Black Mark Resistant ..... Excellent

Scuff Resistant ..... Excellent  
Resistant to Soiling ..... Excellent  
Gloss Retention ..... Excellent  
Immediate Wet Look Gloss ..... Outstanding  
Stability ..... 1 Year Minimum in  
Original Unopened  
Container

## DIRECTIONS

**Application:** Using a clean mop or applicator apply a thin uniform coat of sealer/finish. Allow to dry for a minimum of 30 minutes after each coat. Do not apply more than 4 coats in a 24 hour period. Floor should be thoroughly dry before traffic is allowed in area.

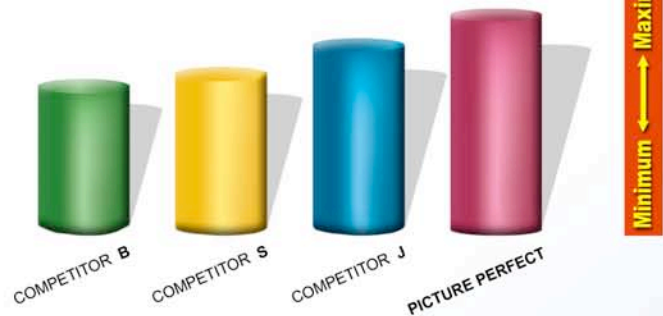
**High Speed Burnishing:** This is an ideal product for use with high speed polishing or burnishing machines of 1000 rpm or higher. Prior to high speed buffing or burnishing the floor surface should be dust or dry mopped. After the floor finish has set for two days damp mopping prior to buffing is also acceptable. When buffing or dry burnishing use a peach or tan buffing pad. Approved mop on restorers or laminators can be used when surface is worn.

**Maintenance:** Maintain in the conventional manner by cleaning with a treated yarn dust mop to remove surface dirt daily. Damp mop or clean with an automatic scrubber as required, using an approved neutral cleaner at the specified dilution.

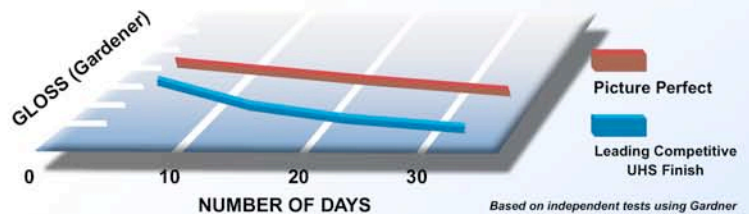
Distributed By:



## INITIAL APPLICATION GLOSS



## LONG TERM GLOSS RETENTION



Based on independent tests using Gardner  
Gloss meter readings (60° reflectance)

## COORDINATED FLOOR CARE PRODUCTS

### **BARE BONES No-Rinse/No-Scrub Liquifying Stripper**

A 55%+ active stripper that cuts through the most extreme build-up of floor finish easily. Caustic free formula requires no rinsing, saving time and labor; works with lightning speed. Provides stripping performance by which all other products are measured.

### **IMAGE Deodorizing Neutral Cleaner**

Outstanding Puri™ fragrance deodorizes as it cleans. Low pH formula requires no rinsing, yet leaves floor surfaces beautifully clean. Ideal for all floor maintenance programs. UL Classified for Slip Resistance.

### **SPIT SHINE UHS Kleen & Burnish**

Specifically designed for use with High Speed / UHS equipment. This thermal reactive solution can be used by mop on restoration, applied by an auto scrubber or used as a spray buff. Leaves floors with a dramatic deep wet look gloss. UL Classified for Slip Resistance.

### **AQUA MAGIC Ultra High Speed Burnishing Pads**

Available in all popular sizes.



**National Chemical Laboratories**  
401 North 10th Street • Philadelphia, PA 19123  
(800) NAT-CHEM • (215) 922-1200 • FAX (215) 922-5517  
[www.nclonline.com](http://www.nclonline.com)